

For more information on this product and on our complete package of solutions

Please contact our **local service center:**

▶ **VESUVIUS SENSORS & PROBES DO BRASIL**

Rua Benjamin da Silveira Baldy, 2001  
Paulas e Mendes  
CEP 18170-000 Piedade  
São Paulo, Brazil  
Tel: +55 15 3344 9000

▶ **VESUVIUS SENSORS & PROBES USA**

33554 Pin Oak Pkwy  
Avon Lake, OH 44012  
United States of America  
Tel: +1 440 930 0362

▶ **VESUVIUS SENSORS & PROBES EUROPE**

Via Mantova, 10  
20835, Muggiò (MB) Italy  
Tel: +39 039 27111.1

▶ **VESUVIUS SENSORS & PROBES ARGENTINA**

Urzquia 919, Piso 1, Rosario,  
Santa S2000ANC  
S2000ANC Exterior Argentina  
Tel: (54) 341 449 5008

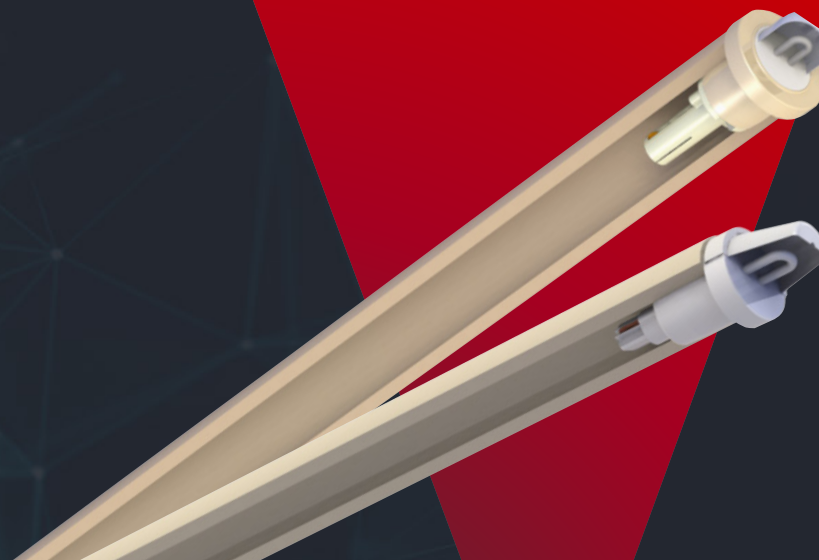
▶ **VESUVIUS SENSORS & PROBES CANADA**

175 Calixa-Lavallée  
Verchères, QC, Canada  
J0L 2R0  
Tel: (450) 583-3917

▶ **VESUVIUS SENSORS & PROBES FRANCE**

Centre d'Activités Economiques – ZI de  
Franchepré 54240 JOEUF – France  
Tel: +33 3 87 50 03 10

\*VESUVIUS Sensors & Probes is a trade mark of the Vesuvius Group, registered in certain countries, used under license. All rights reserved. No part of this publication may be reproduced, stored in a retrieval system of any nature or transmitted in any form or by any means, including photocopying and recording, without the written permission of the copyright holder or as expressly permitted by law. Applications for permission shall be made to the publisher at the address mentioned. Warning: The doing of an unauthorized act in relation to a copyright work may result in both a civil claim for damages and criminal prosecution. All statement, information and data contained herein are published as a guide and although believed to be accurate and reliable (having regard to the manufacturer's practical experience) neither the manufacturer, licensor, seller nor publisher represents nor warrants, expressly or impliedly: (1) their accuracy/reliability, (2) that the use of the product(s) will not infringe third party rights, (3) that no further safety measures are required to meet local legislation. The seller is not authorized to make representations nor contract on behalf of the manufacturer/licensor. All sales by the manufacturer/seller are based on their respective conditions of sale available on request.



PRODUCT

## Temperature sensors for foundry disposable thermocouples for molten metal

- Provides an effective way of obtaining a high precision temperature in any molten metal
- Different diameter sizes to work from the lowest to the highest mechanical stress applications
- Safety improvements: Non-splash thermocouples protects operators and equipment
- Multi dip thermocouples allows multiple immersions keeping a good performance

# Vesuvius Temperature Sensors for Foundry

## Disposable thermocouples with the best quality standards

- Vesuvius disposable thermocouples fulfill the greatest variety of needs for temperature measurements in industries that process molten metals;
- Vesuvius offers different versions to measure the temperature of metals and alloys within the range from 1100°C (2000 °F) up to 1800°C (~3270 °F);
- The thermocouples can be of Type-S, Type-R or Type-B and are calibrated according to the International Temperature Standards (IPTS 48, IPTS 68 and ITS 90).



FULL PROTECTION



"NACKED NECK" VERSION

## Non-Splash Thermocouples

- Where operator and/or equipment safety can be affected by metal splashes, it's recommended to use the NS (non-splash) thermocouples;
- The full non-splash protection is basically inert to the molten metal bath protecting collectedly the operator from metal splashes;
- The "naked-neck" version produces intentionally a small and controlled reaction, necessary in applications where the slag layer is too thick.
- Apart from protecting the operator, the non-splash sleeve also provides an extra protection for the lances and hardware, increasing its durability in large ladle / furnace applications or where the temperature is very high.

# Temperature Sensors for Foundry

## Multi dip thermocouples

- Replace in many cases the single dip thermocouples with economical advantage;
- They are specially developed for applications that do not require high mechanical and thermal demands, usually small amounts of metal without slag;
- The multi dip thermocouples are available in type S, R, B and K versions. The type K version is designed for low temperature applications and its durability is extremely high.



## Non Splash multi dip thermocouples

- Multi dip thermocouples with non-splash protection are recommended for higher demand foundry applications;
- Apart from protecting the operator, the non-splash sleeve also provides an extra protection for the lances and hardware, increasing its durability in foundry applications.

